

Meeting & Event Guide

OMNI PGA FRISCO RESORT



OMNI
PGA FRISCO

RESORT LOBBY

Property Overview

Located 30 miles north of downtown Dallas, the Omni PGA Frisco Resort stands as Texas' premier meeting destination, offering a rich tapestry of local flavor through its authentic design, exceptional amenities, and outstanding service.

Beyond the championship golf and extensive spa amenities, the resort features thirteen diverse on-site food and beverage outlets, along with unique retail offerings. Whether you're planning a small gathering or a large-scale event, the variety of flexible indoor and outdoor meeting and event spaces provide scenic backdrops and unmatched hospitality, ensuring every event is a memorable success.

ONE BEDROOM SUITE

Resort Highlights

ACCOMMODATIONS

- 500 distinctive guest rooms and suites with subtle nods to Texas culture and spectacular views of the lush fairways
- 10 luxurious four-bedroom Ranch Homes, ideal for groups seeking a spacious and private getaway
- Concierge Service and Select Guest Loyalty Program

MEETING & EVENT SPACE

- 127,000 square feet of event space
- Two spacious ballrooms that offer nearly 34,000 square feet of event space
- 19 meeting rooms
- Nine flexible outdoor venues that offer an array of scenic backdrops
- 5,000 square foot indoor/outdoor pavilion

13 DISTINCT DINING OPTIONS

- Trick Rider offers upscale steak and seafood in a warm and truly Texan setting
- The Apron serves creative Texas and California fare with spectacular views of Fields Ranch
- Ryder Cup Grille provides scenic golf course views and all-American fare
- Ice House showcases slow smoked BBQ, a house-made Dr. Pepper BBQ Sauce, and six live-hitting bays
- Lounge by Topgolf features Tex Mex inspired cuisine and five swing suites which offer an array of games

CHAMPIONSHIP GOLF

- Two 18-hole championship golf courses, Fields Ranch East – designed by Gil Hanse – and Fields Ranch West – designed by Beau Welling
- The Swing, a lighted 10-hole, par-3 short course
- The Dance Floor, a 2-acre putting course and entertainment area
- Monument PGA District, home to ample play options, unique simulations, coaching experiences and more
- Just steps from the PGA of America headquarters the heart of modern golf culture where players of all ages and skill levels can enjoy the game.

SPA & WELLNESS

- 20 Treatment Rooms offering massage, facials, and body treatments
- Group wellness breaks
- Hydrotherapy, Steam, and Infrared Sauna
- Private pool sanctuary
- Wellness-driven foods including lite bites, healthy juices, elixirs, and sweet treats
- Full Service Salon offering hair, make-up and nail services



Meeting & Event Space



PANTHER CREEK PAVILION



RYDER CUP BALLROOM

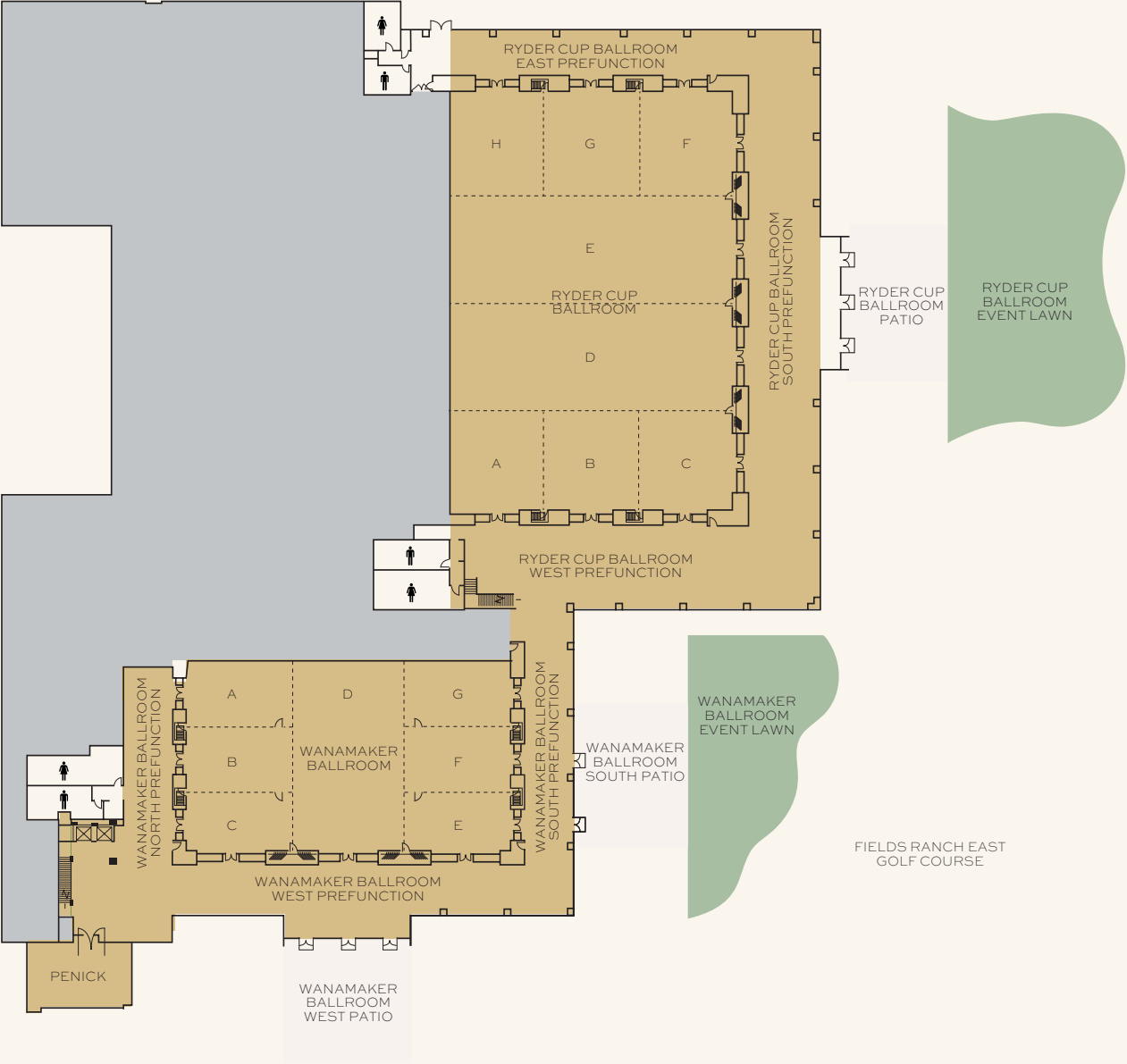


WORCESTER BOARDROOM



THE DANCE FLOOR

Ballroom Level



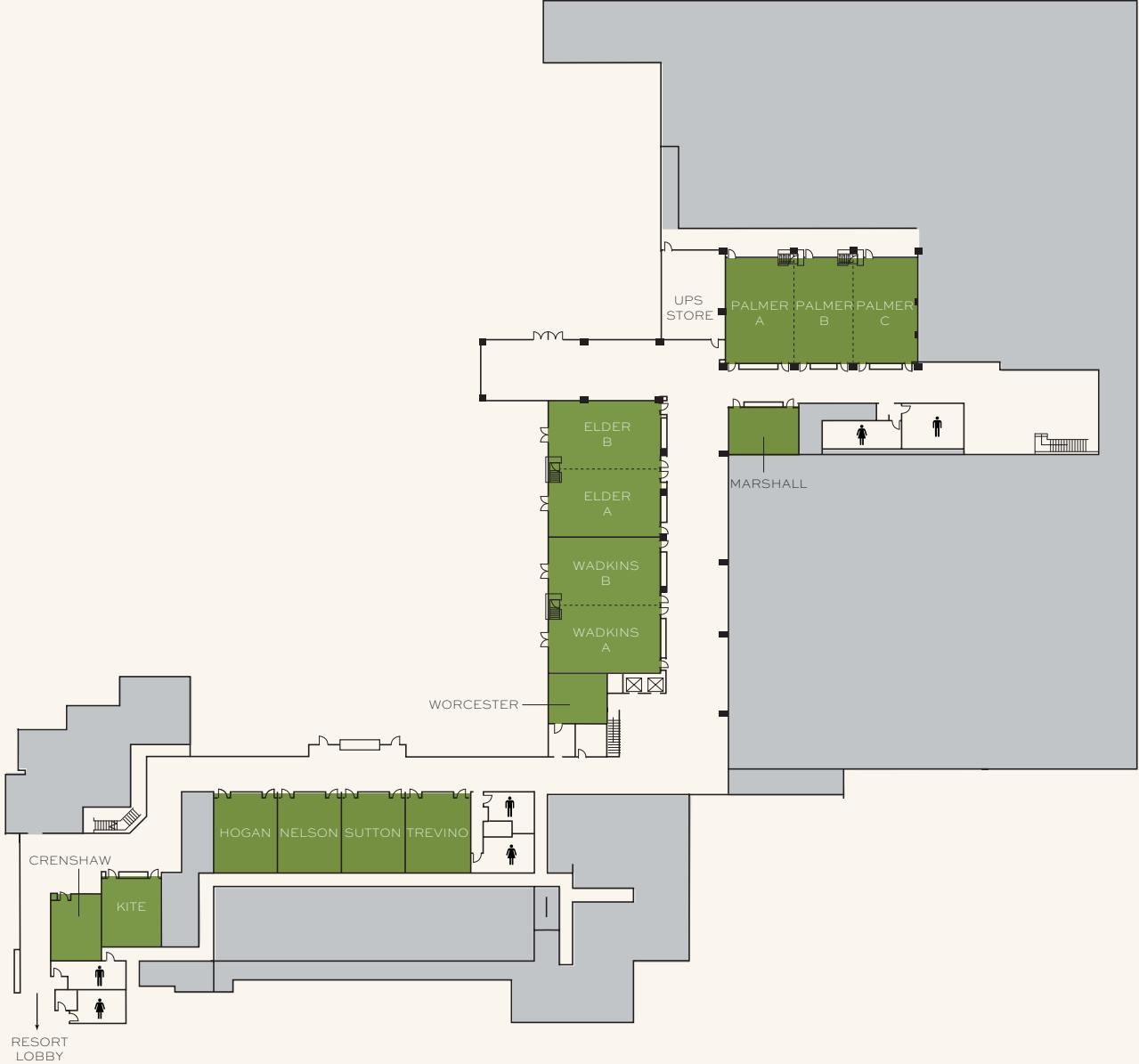
	DIMENSIONS L X W	SQUARE FOOTAGE	CAPACITY LIMIT	THEATRE	CLASSROOM (3 PER 6')	RECEPTION	ROUNDS OF 10	CRESCENT ROUNDS OF 7	CONFERENCE (3 PER 6')	U-SHAPE (3 PER 6')	HOLLOW SQUARE (3 PER 6')
BALLROOM LEVEL											
RYDER CUP BALLROOM	127 x 186	23,622	1,542	1,542	1,140	1,542	1,260	882	-	-	-
A	46 x 43	1,978	123	123	111	123	90	63	36	45	54
B	46 x 41	1,886	124	124	105	124	90	63	36	45	54
C	46 x 43	1,978	124	112	105	124	90	63	36	45	54
D	47 x 127	5,969	392	364	345	392	330	231	114	123	144
E	47 x 127	5,969	394	392	345	394	330	231	114	123	144
F	47 x 40	1,880	129	126	84	129	90	63	36	45	54
G	47 x 41	1,927	129	126	120	129	90	63	36	45	54
H	47 x 40	1,880	127	126	114	127	90	63	36	45	54
A,B	83 x 46	3,818	247	240	240	247	200	140	72	81	102
A-C	127 x 46	5,842	371	371	357	371	300	210	-	-	-
A-D	127 x 93	11,811	763	763	726	763	630	441	-	-	-
A-E	127 x 140	17,780	1,157	1,152	1,134	1,157	950	665	-	-	-
B,C	83 x 46	3,818	248	248	162	248	200	140	72	87	96
D,E	127 x 94	11,938	786	780	759	786	650	455	-	-	-
D-H	127 x 140	17,780	1,171	1,150	1,134	1,171	970	679	-	-	-
E-H	127 x 93	11,811	779	779	759	779	630	441	-	-	-
F,G	83 x 46	3,818	258	256	255	258	210	147	78	87	96
F-H	127 x 47	5,969	385	385	360	385	300	210	-	-	-
G,H	83 x 46	3,818	256	252	210	256	180	126	72	81	102
PREFUNCTION	-	16,399	-	-	-	1,640	840	-	-	-	-
PREFUNCTION SOUTH	249' x 33'	8,896	-	-	-	740	420	-	-	-	-
PREFUNCTION EAST	150' x 19'	2,875	-	-	-	320	140	-	-	-	-
PREFUNCTION WEST	156' x 36'	4,628	-	-	-	580	380	-	-	-	-
PATIO	68' x 46'	3,218	-	-	-	320	200	-	-	-	-
EVENT LAWN	-	8,060	-	598	-	800	540	-	-	-	-

Meeting room capacities were determined by the use of the "Hotel Planner Banquet Space Calculator" using 60" rounds of 10, three chairs per 6'x30" table (U-Shape and Conference capacity) and three chairs per 6'x18" table (Classroom capacity) allowing for minimal audiovisual equipment. Ballroom/meeting room square footage, capacities and dimensions are subject to change.

	DIMENSIONS L X W	SQUARE FOOTAGE	CAPACITY LIMIT	THEATRE	CLASSROOM (3 PER 6')	RECEPTION	ROUNDS OF 10	CRESCENT ROUNDS OF 7	CONFERENCE (3 PER 6')	U-SHAPE (3 PER 6')	HOLLOW SQUARE (3 PER 6')
BALLROOM LEVEL											
WANAMAKER BALLROOM	82 x 142	11,644	791	765	540	791	660	462	-	-	-
A	46 x 27	1,242	81	80	63	81	60	42	36	39	48
B	46 x 28	1,288	89	88	72	89	60	42	36	39	48
C	46 x 27	1,242	89	88	72	89	60	42	36	36	42
D	50 x 82	4,100	273	272	216	273	240	168	72	84	102
E	46 x 27	1,242	81	80	63	80	50	35	36	36	42
F	46 x 28	1,288	89	88	63	88	50	35	36	36	42
G	46 x 27	1,242	89	88	63	88	60	42	36	36	48
A,B	46 x 55	2,530	170	170	96	170	120	84	42	51	60
A-C	46 x 82	3,772	259	252	228	252	210	147	102	108	114
A-D	82 x 96	7,872	532	528	330	528	420	294	78	102	126
B,C	46 x 55	2,530	178	171	96	171	120	84	42	51	60
D-G	82 x 96	7,872	532	528	429	532	420	294	78	102	126
E,F	46 x 55	2,530	170	165	120	165	110	77	36	51	60
E-G	46 x 82	3,772	259	256	165	256	180	126	66	75	84
F,G	46 x 55	2,530	178	178	105	178	120	84	42	51	60
PREFUNCTION	-	9,552	-	-	-	800	530	-	-	-	-
PREFUNCTION WEST	182 x 21	4,648	-	-	-	500	320	-	-	-	-
PREFUNCTION SOUTH	131 x 24	2,851	-	-	-	200	100	-	-	-	-
PREFUNCTION NORTH	85 x 22	2,053	-	-	-	100	90	-	-	-	-
SOUTH PATIO	61 x 42	2,540	-	-	-	250	100	-	-	-	-
WEST PATIO	56 x 51	2,854	-	-	-	150	50	-	-	-	-
EVENT LAWN	-	5,715	-	475	-	575	400	-	-	-	-
PENICK	46 x 27	1,242	72	63	48	72	50	35	36	36	36

Meeting room capacities were determined by the use of the "Hotel Planner Banquet Space Calculator" using 60" rounds of 10, three chairs per 6'x30" table (U-Shape and Conference capacity) and three chairs per 6'x18" table (Classroom capacity) allowing for minimal audiovisual equipment. Ballroom/meeting room square footage, capacities and dimensions are subject to change.

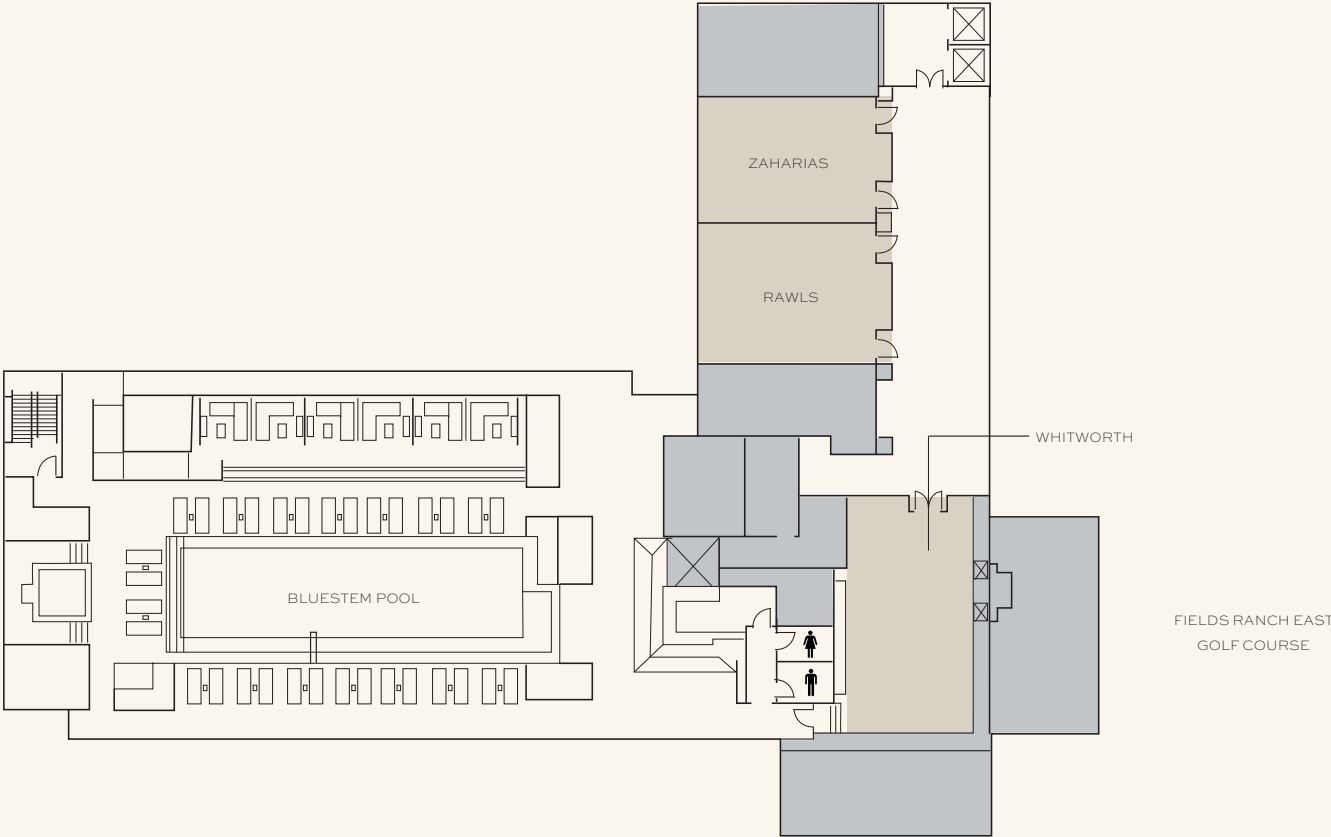
Second Level



	DIMENSIONS L X W	SQUARE FOOTAGE	CAPACITY LIMIT	THEATRE	CLASSROOM (3 PER 6')	RECEPTION	ROUNDS OF 10	CRESCENT ROUNDS OF 7	CONFERENCE (3 PER 6')	U-SHAPE (3 PER 6')	HOLLOW SQUARE (3 PER 6')
SECOND LEVEL											
PALMER	46 x 80	3,680	247	224	180	240	180	126	72	78	84
A	46 x 28	1,288	88	72	54	80	60	42	30	33	36
B	46 x 25	1,150	76	56	36	76	30	21	30	30	30
C	46 x 27	1,242	83	72	45	80	60	42	30	33	45
MARSHALL	21 x 33	693	50	49	30	50	20	14	24	21	24
ELDER	50 x 56	2,800	184	184	150	184	150	105	48	57	66
A	50 x 28	1,400	92	92	72	92	70	49	36	39	42
B	50 x 28	1,400	92	92	72	92	70	49	36	39	42
WADKINS	50 x 56	2,800	184	184	150	184	150	105	48	57	66
A	50 x 28	1,400	92	90	72	92	70	49	36	39	42
B	50 x 28	1,400	92	90	72	92	70	49	36	39	42
TREVINO	33 x 26	858	57	42	30	57	30	21	24	24	24
SUTTON	32 x 26	832	57	42	30	57	30	21	24	24	24
NELSON	33 x 26	858	57	42	30	57	30	21	24	24	24
HOGAN	33 x 26	858	57	42	30	57	30	21	24	24	24
KITE	31 x 25	775	49	42	24	49	20	14	18	24	24
CRENSHAW	26 x 21	546	35	25	18	35	10	7	18	15	18
WORCESTER BOARDROOM	24 x 22	528	12	-	-	-	-	-	12	-	-

Meeting room capacities were determined by the use of the "Hotel Planner Banquet Space Calculator" using 60" rounds of 10, three chairs per 6'x30" table (U-Shape and Conference capacity) and three chairs per 6'x18" table (Classroom capacity) allowing for minimal audiovisual equipment. Ballroom/meeting room square footage, capacities and dimensions are subject to change.

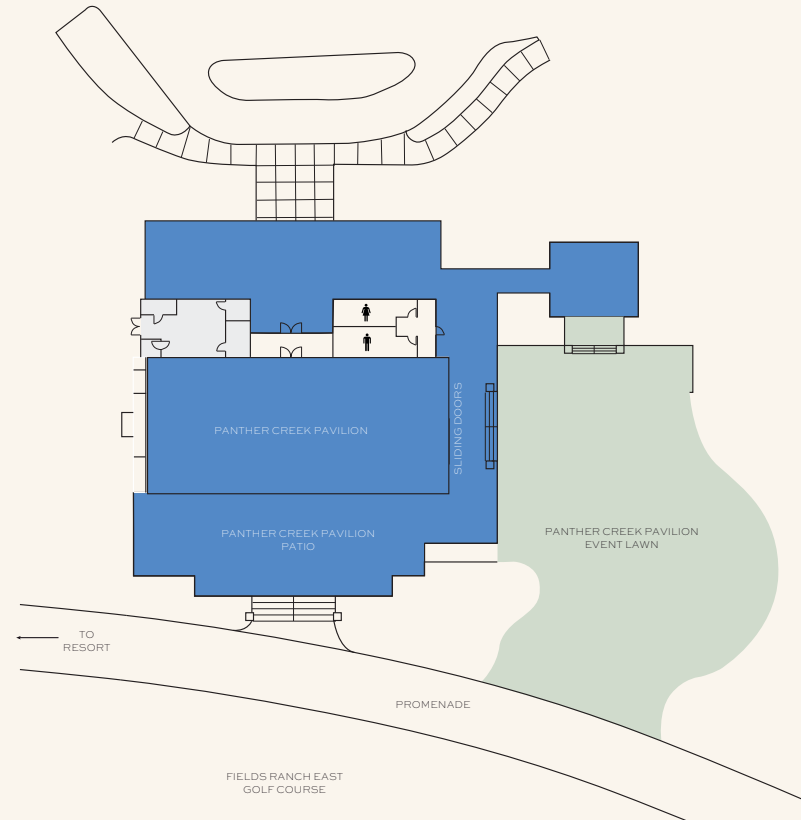
Sixth Floor



	DIMENSIONS L X W	SQUARE FOOTAGE	CAPACITY LIMIT	THEATRE	CLASSROOM (3 PER 6')	RECEPTION	ROUNDS OF 10	CRESCENT ROUNDS OF 7	CONFERENCE (3 PER 6')	U-SHAPE (3 PER 6')	HOLLOW SQUARE (3 PER 6')
SIXTH FLOOR											
WHITWORTH	47 x 29	1,363	84	63	42	80	50	35	36	36	36
RAWLS	33 x 25	825	58	49	30	58	40	28	24	30	30
ZAHARIAS	33 x 22	726	50	48	30	50	30	21	24	24	24

Meeting room capacities were determined by the use of the "Hotel Planner Banquet Space Calculator" using 60" rounds of 10, three chairs per 6'x30" table (U-Shape and Conference capacity) and three chairs per 5'x18" table (Classroom capacity) allowing for minimal audiovisual equipment. Ballroom/meeting room square footage, capacities and dimensions are subject to change.

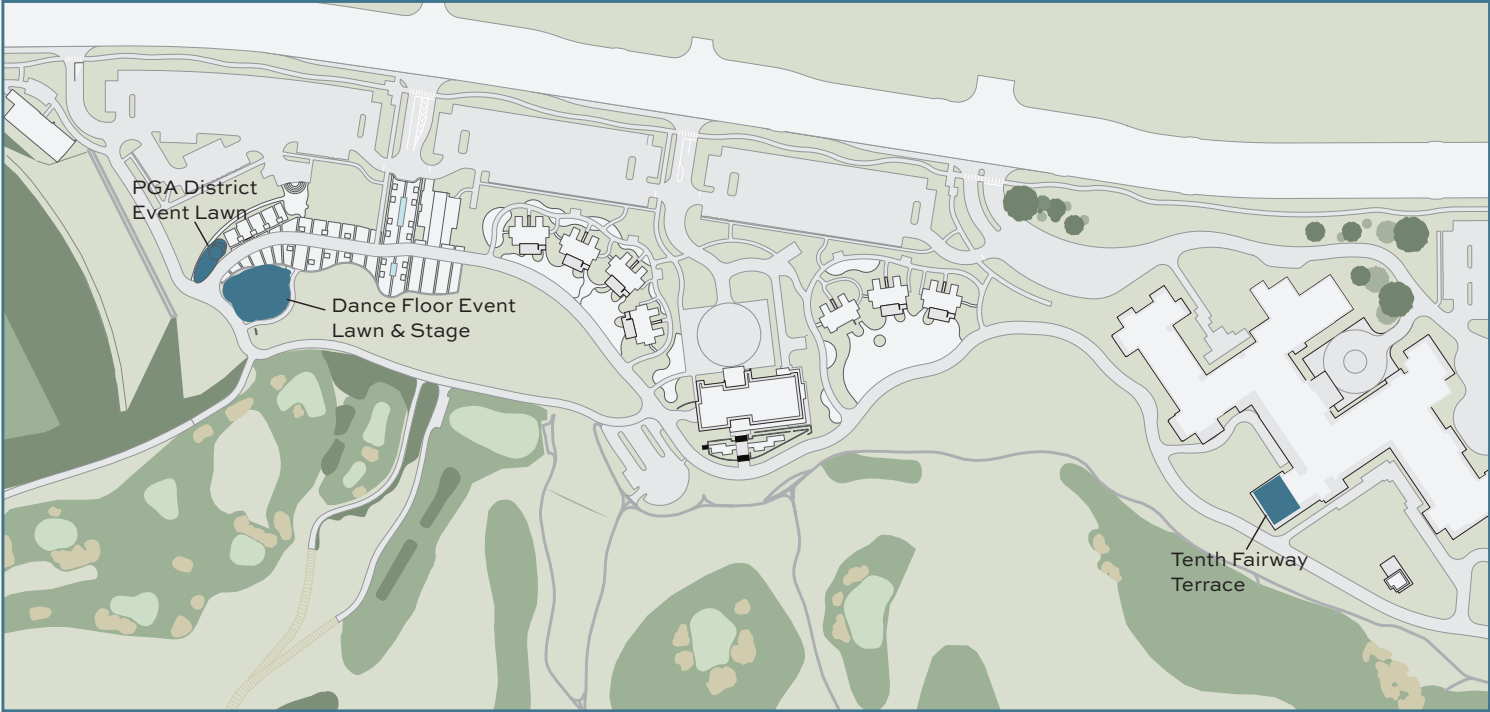
Panther Creek Pavilion



	DIMENSIONS L X W	SQUARE FOOTAGE	CAPACITY LIMIT	THEATRE	CLASSROOM (3 PER 6')	RECEPTION	ROUNDS OF 10	CRESCENT ROUNDS OF 7	CONFERENCE (3 PER 6')	U-SHAPE (3 PER 6')	HOLLOW SQUARE (3 PER 6')
PANTHER CREEK PAVILION	106 x 47	4,982	333	330	300	333	270	189	96	102	120
PATIO	-	3,015	-	-	-	275	210	-	-	-	-
EVENT LAWN	-	9,375	937	741	-	900	630	-	-	-	-

Meeting room capacities were determined by the use of the "Hotel Planner Banquet Space Calculator" using 60" rounds of 10, three chairs per 6'x30" table (U-Shape and Conference capacity) and three chairs per 6'x18" table (Classroom capacity) allowing for minimal audiovisual equipment. Ballroom/meeting room square footage, capacities and dimensions are subject to change.

Outdoor Event Venues



	SQUARE FOOTAGE	CAPACITY LIMIT	THEATRE	RECEPTION	ROUNDS OF 10
OUTDOOR EVENT VENUES					
PGA DISTRICT EVENT LAWN	5,580	-	-	350	240
DANCE FLOOR EVENT LAWN	5,214	520	360	350	350
STAGE	800	-	-	-	-
TENTH FAIRWAY TERRACE	2,800	200	128	200	120

Meeting room capacities were determined by the use of the "Hotel Planner Banquet Space Calculator" using 60" rounds of 10, three chairs per 6'x30" table (U-Shape and Conference capacity) and three chairs per 6'x18" table (Classroom capacity) allowing for minimal audiovisual equipment. Ballroom/meeting room square footage, capacities and dimensions are subject to change.

Resort Map



A PGA Coaching Center

B Fields Ranch Practice Facility

C Ice House

D The Dance Floor Event Lawn

E The Swing

F The Dance Floor

G Monument Realty PGA District
Shopping & Dining

Lounge By Topgolf
Margaret's Cones & Cups
PGA Shop
Gimme Toys
Blue Lacy Mercantile
Vineyard Vines

H Ranch Houses 1-4

I Ranch Houses 5-7

J Fields Ranch Clubhouse

Ryder Cup Grille
Fields Ranch Golf Shop

K The Bunker

G Omni PGA Frisco Resort

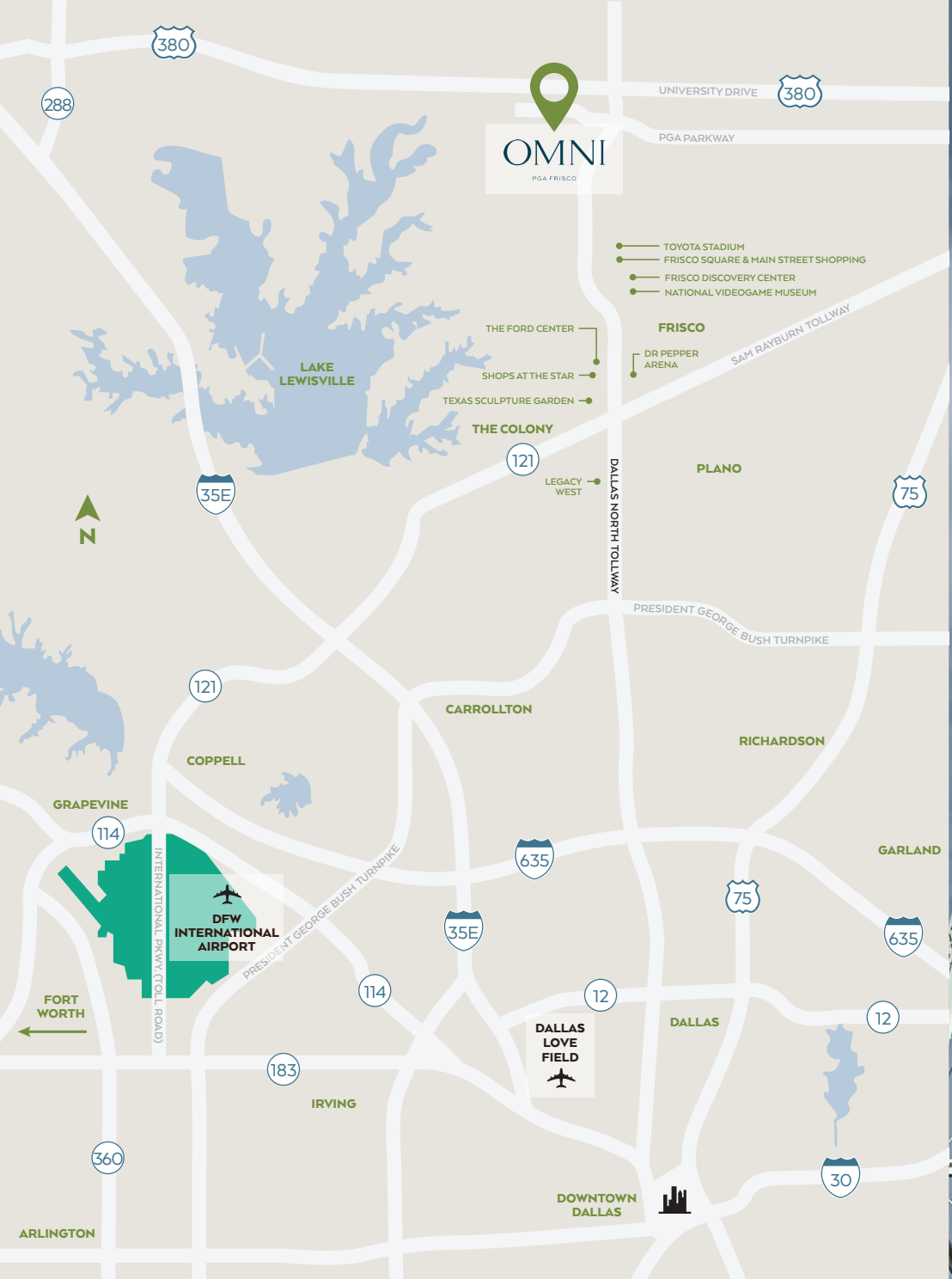
Trick Rider
The Apron Kitchen + Bar
Toast & Tee Coffee Collective
Green Cactus Cafe
Mokara Spa
The Lookout
Resort Pools
Meeting & Event Space
Prairie Rose
The Collective Green

J Conference Center
UPS Store

K Self-Parking/Shuttle

H Panther Creek Pavilion

I Ranch Houses 8-10



Frisco Highlights

Frisco, Texas, is a thriving and rapidly expanding city located just 25 miles north of Dallas. As part of the Dallas-Fort Worth metroplex, Frisco is renowned for its vibrant community, exceptional schools, and abundant recreational opportunities. The city masterfully combines modern amenities with a rich historical backdrop, featuring attractions like the Frisco Heritage Museum and a bustling shopping and entertainment district. Whether you're a family, a professional, or a visitor, Frisco offers a dynamic and welcoming environment for all.

ARTS & CULTURE

- Frisco Discovery Center | 5.9 miles
- Heritage Museum | 5.9 miles
- National Videogame Museum | 8.8 miles
- Museum of the American Railroad | 8.9 miles
- Texas Sculpture Garden | 9.1 miles

SPORTS & RECREATION

- Toyota Stadium | 8.3 miles
- The Ford Center | 11.7 miles
- Lincoln Experience Center | 11.7 miles
- Dr Pepper Arena | 12.2 miles
- Dr Pepper Ballpark | 12.5 miles
- iFLY Dallas | 13.0 miles
- Dr Pepper Star Center | 13.5 miles

Notes

OMNI

PGA FRISCO

4341 PGA PARKWAY, FRISCO, TX 75033

OMNIPGAFRISCO.COM