

Meeting & Event Guide

OMNI PGA FRISCO RESORT



OMNI
PGA FRISCO

Property Overview

Located 30 miles north of downtown Dallas, Omni PGA Frisco Resort stands as Texas' premier meeting destination, offering a rich tapestry of local flavor through its authentic design, exceptional amenities, and outstanding service.

Beyond the championship golf and extensive spa amenities, the resort features thirteen diverse on-site food and beverage outlets, along with unique retail offerings. Whether you're planning a small gathering or a large-scale event, the variety of flexible indoor and outdoor meeting and event spaces provide scenic backdrops and gracious hospitality, ensuring every event is a memorable success.



RESORT LOBBY



ONE BEDROOM SUITE

Resort Highlights

ACCOMMODATIONS

- 500 distinctive guest rooms and suites with subtle nods to Texas culture and spectacular views of the lush fairways
- 10 luxurious four-bedroom Ranch House Villas, ideal for groups seeking a spacious and private getaway
- Concierge Service and Select Guest Loyalty Program

MEETING & EVENT SPACE

- 127,000 square feet of event space
- Two spacious ballrooms that offer nearly 34,000 square feet of event space
- 19 meeting rooms
- Nine flexible outdoor venues that offer an array of scenic backdrops
- 5,000 square foot indoor/outdoor pavilion

13 DISTINCT DINING OPTIONS

- Trick Rider offers upscale steak and seafood in a warm and truly Texan setting
- The Apron serves creative Texas and California fare with spectacular views of Fields Ranch
- Ryder Cup Grille provides scenic golf course views and all-American fare
- Ice House showcases slow-smoked BBQ, a house-made Dr. Pepper BBQ Sauce, and six live-hitting bays
- Lounge by Topgolf features Tex-Mex inspired cuisine and five swing suites, which offer an array of games

CHAMPIONSHIP GOLF

- Two 18-hole championship golf courses, Fields Ranch East (designed by Gil Hanse) and Fields Ranch West (designed by Beau Welling)
- The Swing, a lighted 10-hole, par-3 short course
- The Dance Floor, a 2-acre putting course and entertainment area
- Monument PGA District, home to ample play options, unique simulations, coaching experiences and more
- At the PGA Coaching Center, guests experience modern coaching philosophies, state-of-the-art technology, and a strong golf community, all guided by a certified PGA Coach.

SPA & WELLNESS

- 20 Treatment Rooms offering massage, facials, and body treatments
- Group wellness breaks
- Hydrotherapy, Steam, and Infrared Sauna
- Private pool sanctuary with eight poolside cabanas
- Wellness-driven foods including lite bites, healthy juices, elixirs, and sweet treats
- Full-Service Salon offering hair, make-up and nail services



TRICK RIDER



FIELDS RANCH GOLF COURSE



MOKARA SPA

Meeting & Event Space



PANTHER CREEK PAVILION



RYDER CUP BALLROOM

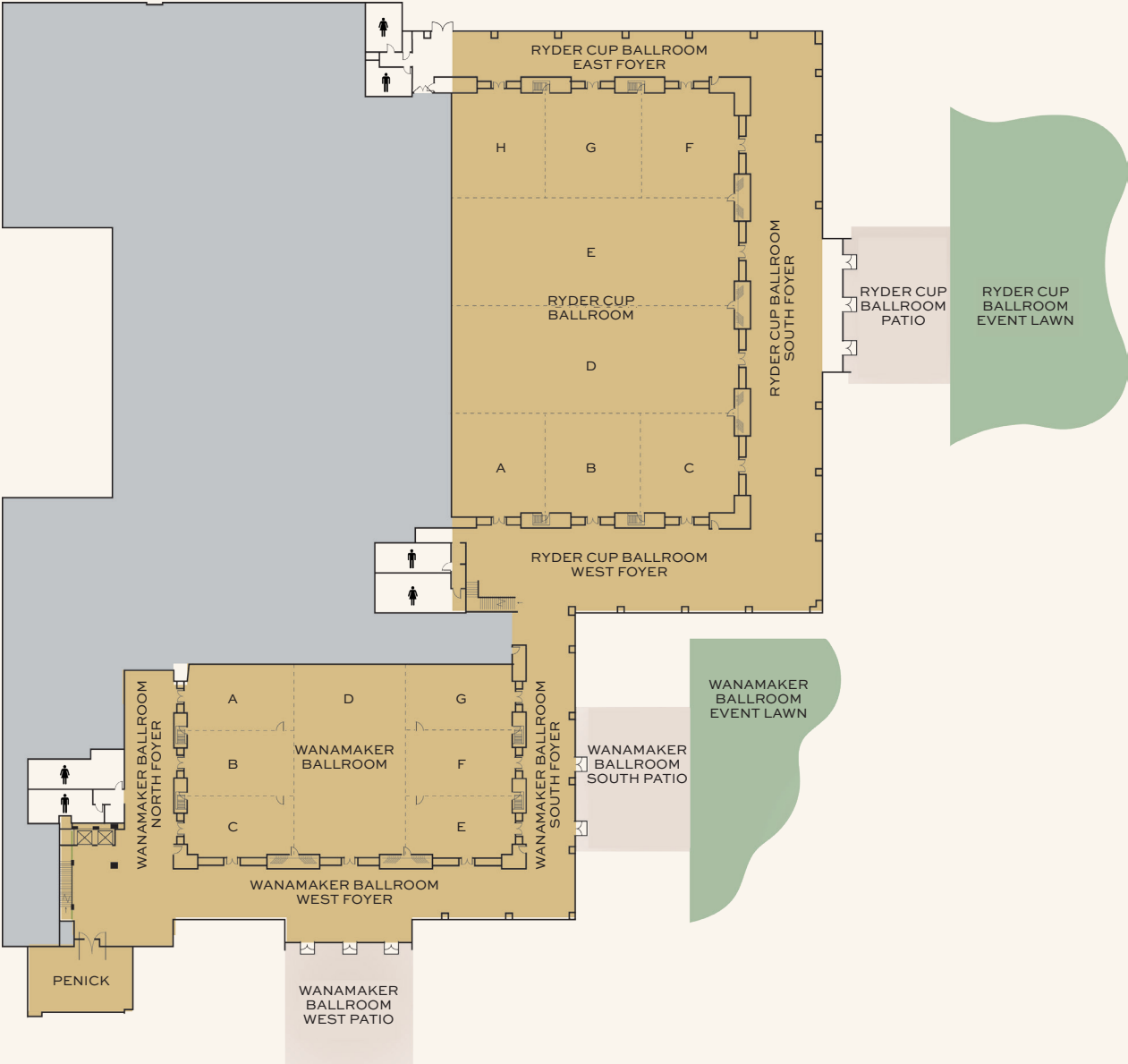


WORCESTER BOARDROOM



THE DANCE FLOOR

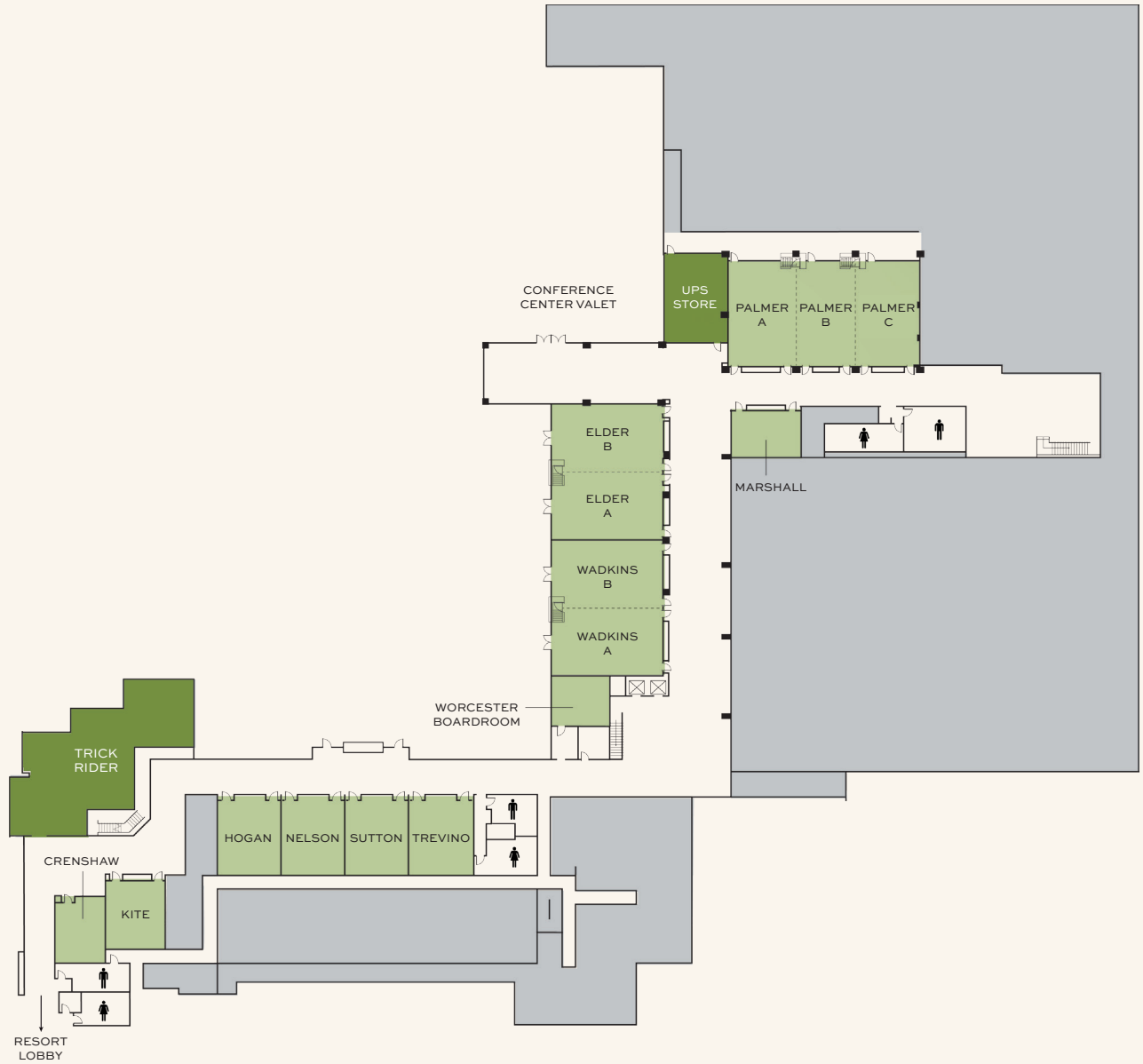
Ballroom Level



	DIMENSIONS L X W	SQUARE FOOTAGE	THEATRE	CLASSROOM	RECEPTION	ROUNDS OF 10	CRESCENT ROUNDS OF 7	CONFERENCE	U-SHAPE	HOLLOW SQUARE
BALLROOM LEVEL										
RYDER CUP BALLROOM	127 x 186	23,622	1,542	1,140	1,542	1,260	882	-	-	-
A	46 x 43	1,978	123	111	123	90	63	36	45	54
B	46 x 41	1,886	124	105	124	90	63	36	45	54
C	46 x 43	1,978	112	105	124	90	63	36	45	54
D	47 x 127	5,969	364	345	392	330	231	114	123	144
E	47 x 127	5,969	392	345	394	330	231	114	123	144
F	47 x 40	1,880	126	84	129	90	63	36	45	54
G	47 x 41	1,927	126	120	129	90	63	36	45	54
H	47 x 40	1,880	126	114	127	90	63	36	45	54
A,B	83 x 46	3,818	240	240	247	200	140	72	81	102
A-C	127 x 46	5,842	371	357	371	300	210	-	-	-
A-D	127 x 93	11,811	763	726	763	630	441	-	-	-
A-E	127 x 140	17,780	1,152	1,134	1,157	950	665	-	-	-
B,C	83 x 46	3,818	248	162	248	200	140	72	87	96
D,E	127 x 94	11,938	780	759	786	650	455	-	-	-
D-H	127 x 140	17,780	1,150	1,134	1,171	970	679	-	-	-
E-H	127 x 93	11,811	779	759	779	630	441	-	-	-
F,G	83 x 46	3,818	256	255	258	210	147	78	87	96
F-H	127 x 47	5,969	385	360	385	300	210	-	-	-
G,H	83 x 46	3,818	252	210	256	180	126	72	81	102
FOYER	-	16,399	-	-	1,640	840	-	-	-	-
SOUTH FOYER	249' x 33'	8,896	-	-	740	420	-	-	-	-
EAST FOYER	150' x 19'	2,875	-	-	320	140	-	-	-	-
WEST FOYER	156' x 36'	4,628	-	-	580	380	-	-	-	-
PATIO	68' x 46'	3,218	-	-	320	200	-	-	-	-
EVENT LAWN	-	8,060	598	-	800	540	-	-	-	-

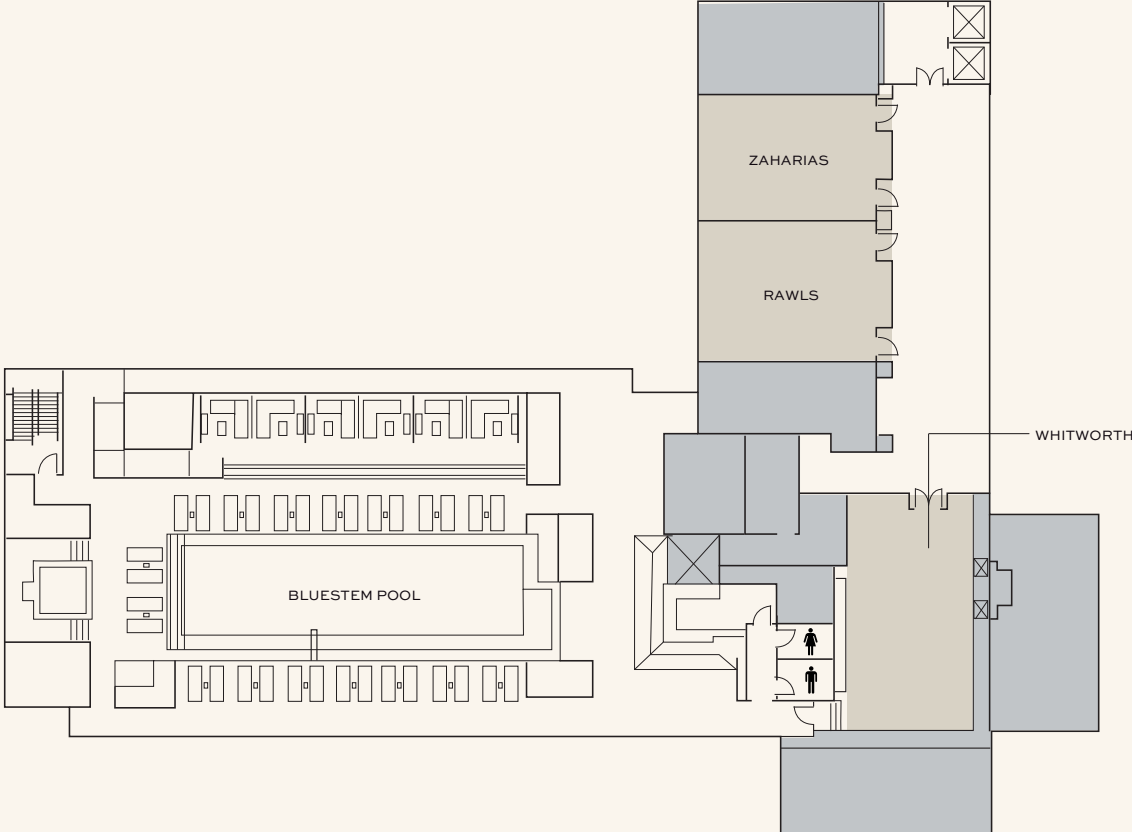
	DIMENSIONS L X W	SQUARE FOOTAGE	THEATRE	CLASSROOM	RECEPTION	ROUNDS OF 10	CRESCENT ROUNDS OF 7	CONFERENCE	U-SHAPE	HOLLOW SQUARE
BALLROOM LEVEL										
WANAMAKER BALLROOM	82 x 142	11,644	765	540	791	660	462	-	-	-
A	46 x 27	1,242	80	63	81	60	42	36	39	48
B	46 x 28	1,288	88	72	89	60	42	36	39	48
C	46 x 27	1,242	88	72	89	60	42	36	36	42
D	50 x 82	4,100	272	216	273	240	168	72	84	102
E	46 x 27	1,242	80	63	80	50	35	36	36	42
F	46 x 28	1,288	88	63	88	50	35	36	36	42
G	46 x 27	1,242	88	63	88	60	42	36	36	48
A,B	46 x 55	2,530	170	96	170	120	84	42	51	60
A-C	46 x 82	3,772	252	228	252	210	147	102	108	114
A-D	82 x 96	7,872	528	330	528	420	294	78	102	126
B,C	46 x 55	2,530	171	96	171	120	84	42	51	60
D-G	82 x 96	7,872	528	429	532	420	294	78	102	126
E,F	46 x 55	2,530	165	120	165	110	77	36	51	60
E-G	46 x 82	3,772	256	165	256	180	126	66	75	84
F,G	46 x 55	2,530	178	105	178	120	84	42	51	60
FOYER	-	9,552	-	-	800	530	-	-	-	-
WEST FOYER	182 x 21	4,648	-	-	500	320	-	-	-	-
SOUTH FOYER	131 x 24	2,851	-	-	200	100	-	-	-	-
NORTH FOYER	85 x 22	2,053	-	-	100	90	-	-	-	-
SOUTH PATIO	61 x 42	2,540	-	-	250	100	-	-	-	-
WEST PATIO	56 x 51	2,854	-	-	150	50	-	-	-	-
EVENT LAWN	-	5,715	475	-	575	400	-	-	-	-
PENICK	46 x 27	1,242	63	48	72	50	35	36	36	36

Second Level



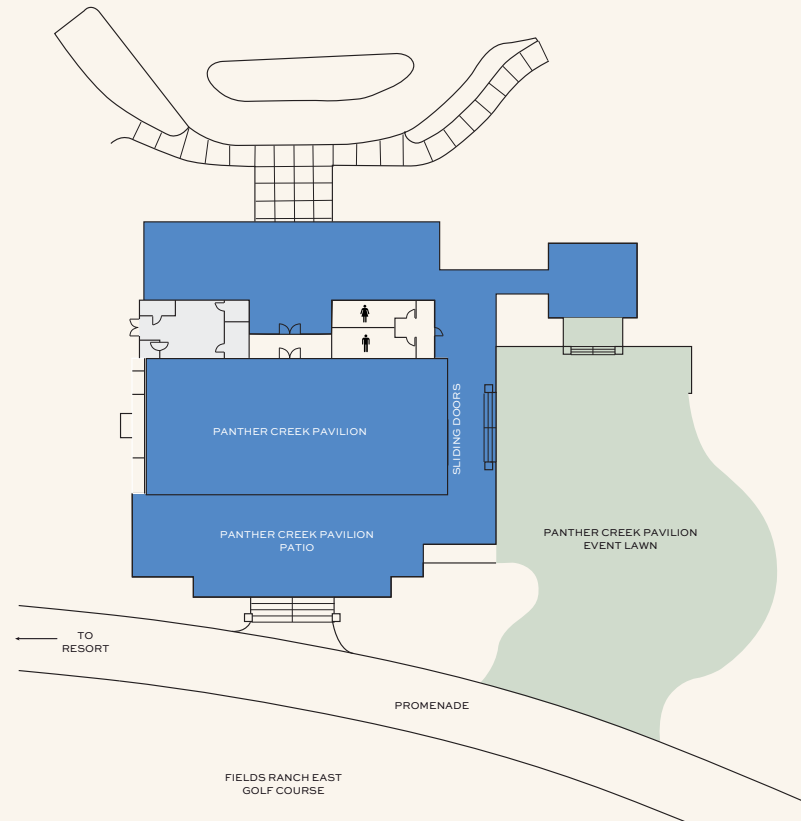
	DIMENSIONS L X W	SQUARE FOOTAGE	THEATRE	CLASSROOM	RECEPTION	ROUNDS OF 10	CRESCENT ROUNDS OF 7	CONFERENCE	U-SHAPE	HOLLOW SQUARE
SECOND LEVEL										
PALMER	46 x 80	3,680	224	180	240	180	126	72	78	84
A	46 x 28	1,288	72	54	80	60	42	30	33	36
B	46 x 25	1,150	56	36	76	30	21	30	30	30
C	46 x 27	1,242	72	45	80	60	42	30	33	45
MARSHALL	21 x 33	693	49	30	50	20	14	24	21	24
ELDER	50 x 56	2,800	184	150	184	150	105	48	57	66
A	50 x 28	1,400	92	72	92	70	49	36	39	42
B	50 x 28	1,400	92	72	92	70	49	36	39	42
WADKINS	50 x 56	2,800	184	150	184	150	105	48	57	66
A	50 x 28	1,400	90	72	92	70	49	36	39	42
B	50 x 28	1,400	90	72	92	70	49	36	39	42
TREVINO	33 x 26	858	42	30	57	30	21	24	24	24
SUTTON	32 x 26	832	42	30	57	30	21	24	24	24
NELSON	33 x 26	858	42	30	57	30	21	24	24	24
HOGAN	33 x 26	858	42	30	57	30	21	24	24	24
KITE	31 x 25	775	42	24	49	20	14	18	24	24
CRENSHAW	26 x 21	546	25	18	35	10	7	18	15	18
WORCESTER BOARDROOM	24 x 22	528	-	-	-	-	-	12	-	-

Sixth Floor



	DIMENSIONS L X W	SQUARE FOOTAGE	THEATRE	CLASSROOM	RECEPTION	ROUNDS OF 10	CRESCENT ROUNDS OF 7	CONFERENCE	U-SHAPE	HOLLOW SQUARE
SIXTH FLOOR										
WHITWORTH	47 x 29	1,363	63	42	80	50	35	36	36	36
RAWLS	33 x 25	825	49	30	58	40	28	24	30	30
ZAHARIAS	33 x 22	726	48	30	50	30	21	24	24	24

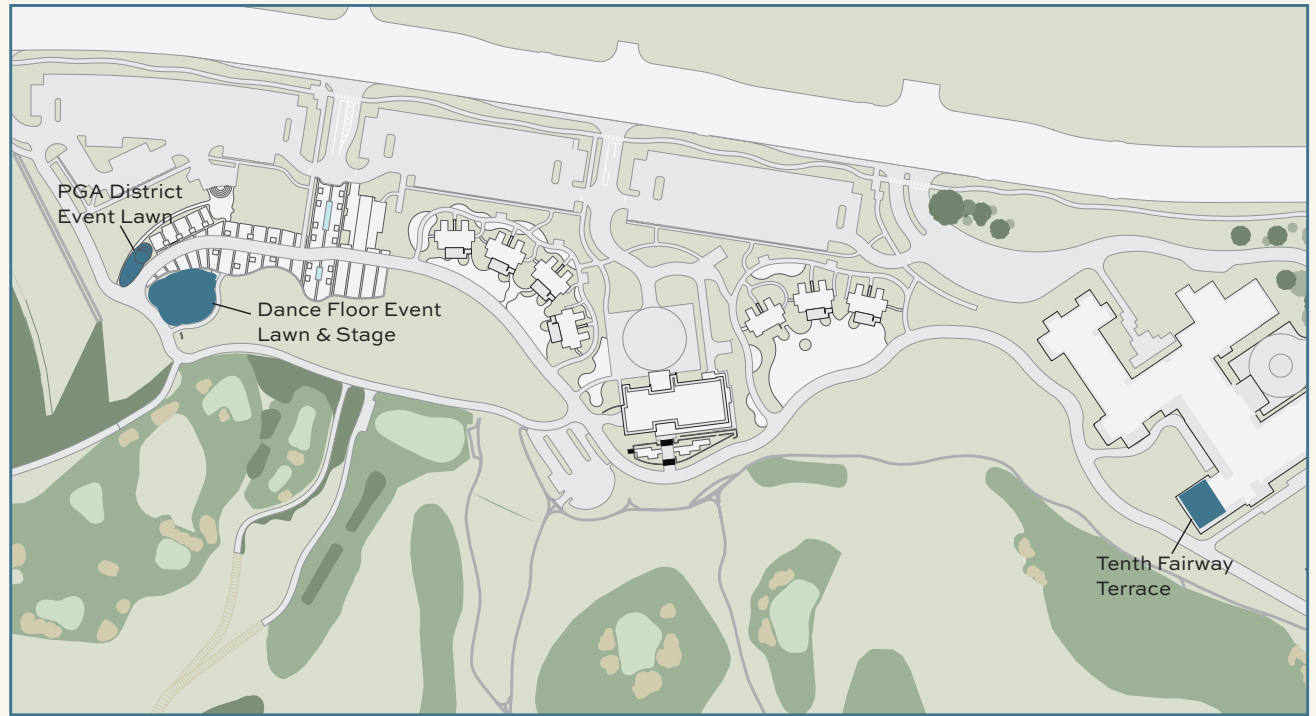
Panther Creek Pavilion



	DIMENSIONS L X W	SQUARE FOOTAGE	THEATRE	CLASSROOM	RECEPTION	ROUNDS OF 10	CRESCENT ROUNDS OF 7	CONFERENCE	U-SHAPE	HOLLOW SQUARE
PANTHER CREEK PAVILION	106 x 47	4,982	330	300	333	270	189	96	102	120
PATIO	-	3,015	-	-	275	210	-	-	-	-
EVENT LAWN	-	9,375	741	-	900	630	-	-	-	-

Outdoor Event Venues

(NON-CONFERENCE CENTER)



	SQUARE FOOTAGE	THEATRE	RECEPTION	ROUNDS OF 10
OUTDOOR EVENT VENUES				
PGA DISTRICT EVENT LAWN	5,580	-	350	240
DANCE FLOOR EVENT LAWN	5,214	360	350	350
TENTH FAIRWAY TERRACE	2,800	128	200	120

Resort Map



- A** PGA Coaching Center
- B** Fields Ranch Practice Facility
- C** Ice House
- D** The Dance Floor Event Lawn
- E** The Swing
- F** The Dance Floor
- G** Monument Realty PGA District Shopping & Dining
 - Lounge By Topgolf
 - Margaret's Cones & Cups
 - PGA Shop
 - Gimme Toys
 - Blue Lacy Mercantile
 - Vineyard Vines
- H** Ranch Houses 1-4
- I** Ranch Houses 5-7
- J** Fields Ranch Clubhouse
 - Ryder Cup Grille
 - Fields Ranch Golf Shop
- K** The Bunker
- L** Omni PGA Frisco Resort
 - Trick Rider
 - The Apron Kitchen + Bar
 - Toast & Tee Coffee Collective
 - Green Cactus Cafe
 - Mokara Spa
 - The Lookout
 - Resort Pools
 - Meeting & Event Space
 - Prairie Rose
 - The Collective Green
- M** Conference Center
 - UPS Store
- N** Self-Parking/Shuttle
- O** Panther Creek Pavilion
- P** Ranch Houses 8-10

Frisco Highlights

Frisco, Texas is a thriving and rapidly expanding city located just 25 miles north of Dallas. As part of the Dallas-Fort Worth metroplex, Frisco is renowned for its vibrant community, exceptional schools, and abundant recreational opportunities. The city masterfully combines modern amenities with a rich historical backdrop, featuring attractions like the Frisco Heritage Museum and a bustling shopping and entertainment district. Whether you're a family, a professional, or a visitor, Frisco offers a dynamic and welcoming environment for all.

ARTS & CULTURE

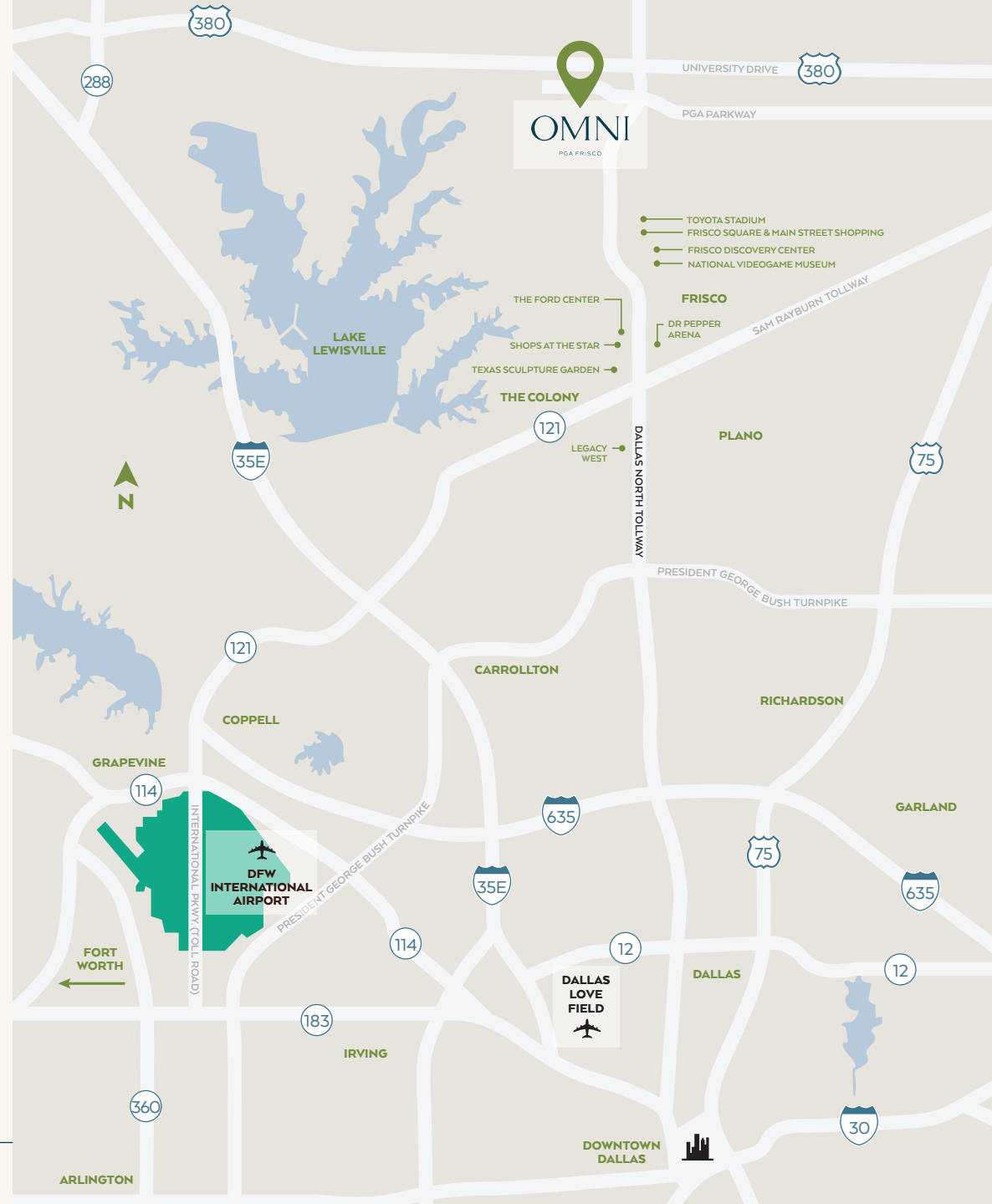
- Frisco Discovery Center | 6 miles
- Heritage Museum | 6 miles
- National Videogame Museum | 9 miles
- Museum of the American Railroad | 9 miles
- Texas Sculpture Garden | 9 miles

SPORTS & RECREATION

- Toyota Stadium | 9 miles
- The Ford Center | 12 miles
- Comerica Center | 12 miles
- Dr Pepper Ballpark | 12 miles
- iFLY Dallas | 13 miles

AIRPORTS

- Dallas Fort Worth International Airport (DFW) | 28 miles
- Dallas Love Field (DAL) | 33 miles



OMNI

PGA FRISCO

4341 PGA PARKWAY, FRISCO, TX 75033

OMNIPGAFRISCO.COM